

*** NEW ITINERARY ***



Photo © Courtesy of Moab Area Travel Council

THE MESA, CANYONLAND'S NATIONAL PARK

NATIONAL PARKS OF THE SOUTHWEST

Arches, Canyonlands and Capitol Reef National Parks • Monument Valley • Lake Powell Cruise • Grand Canyon National Park North Rim • Thanksgiving Point • Salt Lake City • Mormon Tabernacle Choir

Arches National Park contains the world's largest concentration of natural stone arches. You'll view a red, arid desert, with oddly eroded sandstone forms such as fins, pinnacle rocks and arches.

Canyonlands National Park invites you to explore a wilderness of countless canyons and fantastically formed buttes carved by the Colorado River and its tributaries.

Capitol Reef National Park is nearly 100 miles long. Waterpocket Fold is a regional warp or spine with one very steep side in an area of otherwise horizontal layers.

Monument Valley provides perhaps the most enduring and definitive images of the American

West. The isolated red mesas and buttes surrounded by empty, sandy desert have been filmed and photographed countless times.

Enjoy a dinner cruise on beautiful **Lake Powell**, the second largest man-made lake in the country.

Grand Canyon National Park North Rim is 1000 feet higher than the more popular South Rim.

World-Class **Thanksgiving Point** includes more than 60 mounted dinosaurs, a 55-acre garden, a six-story 3-D theater and the Museum of Natural Curiosity.

Live performance of the **Mormon Tabernacle Choir** and a tour of **Salt Lake City**.

- Days 1-2 Chicago to Grand Junction / Moab
- Day 3 Arches / Canyonlands National Parks
- Day 4 Capitol Reef Nat'l Park
- Day 5 Monument Valley
- Day 6 Lake Powell

- Day 7 Grand Canyon National Park North Rim
- Day 8 Kanab to Lehi
- Day 9 Thanksgiving Point
- Day 10 Salt Lake City to Price
- Days 11-12 En Route to Chicago

TOUR DATE(S):

2018

Fri., Sept. 14 to Tues., Sept. 25

TOUR PRICE:

All prices are per person / double occupancy unless otherwise stated.

\$2,995 - 12 Days

Upgrades: Roomette + \$695
Bedroom + \$1,345

SINGLE \$3,895

Upgrade: Roomette + \$1,390

FLY OPTION:

Fly to Grand Junction, return from Salt Lake City.

9 Days

Price: \$2,545

Single: \$3,445

America by Rail will be happy to arrange your flights. Airfare is not included in the above price.

YOUR TRIP INCLUDES:

- Round-trip transportation by rail from Chicago.
- Reclining coach seat with leg rest on Amtrak for two nights.
- First-class hotel accommodations for nine nights.
- 20 meals.
- Extensive sightseeing.
- Baggage handling, taxes & tips.
- Services of a professional America by Rail Tour Director.

AMERICA BY RAIL WILL BE HAPPY TO MAKE ARRANGEMENTS FOR YOUR CONNECTING TRANSPORTATION TO CHICAGO AND BACK BY RAIL OR AIR.

Day 1: Depart Chicago

National Parks of the Southwest tour members will meet the Tour Director in Chicago's Union Station. You'll board the famous California Zephyr for the 2:00 p.m. departure. The Zephyr features double-decker Superliner equipment.

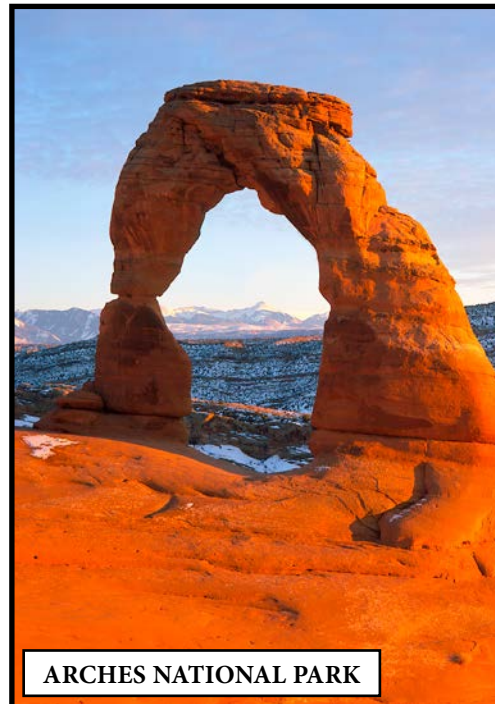
Relax in your reclining coach seat with leg rest. Private Roomettes and Bedrooms are available at an additional cost. After settling in, you may want to go to the glass-walled Sightseer Lounge car. All meals on the train are included beginning with dinner tonight. **D**

Day 2: En Route

When you awaken this morning you may look out your window toward the West and thrill to the sight of the towering, majestic Colorado Rockies in the distance. Plan to get up early, have breakfast in the dining car and find a seat in the glass-walled Sightseer Lounge car for the spectacular scenery that will unfold before you.

The Zephyr will leave Denver and begin its climb over the Front Range toward the Continental Divide. About an hour later you'll encounter the famous 6.2-mile-long Moffat Tunnel and go under the Continental Divide. Throughout the day the train will wind around mountain curves and through numerous tunnels. You'll look down at roaring streams winding through valleys far below.

Our arrival into Grand Junction is scheduled for 3:57 p.m. We'll enjoy dinner in Grand Junction before continuing 113 miles by motorcoach to



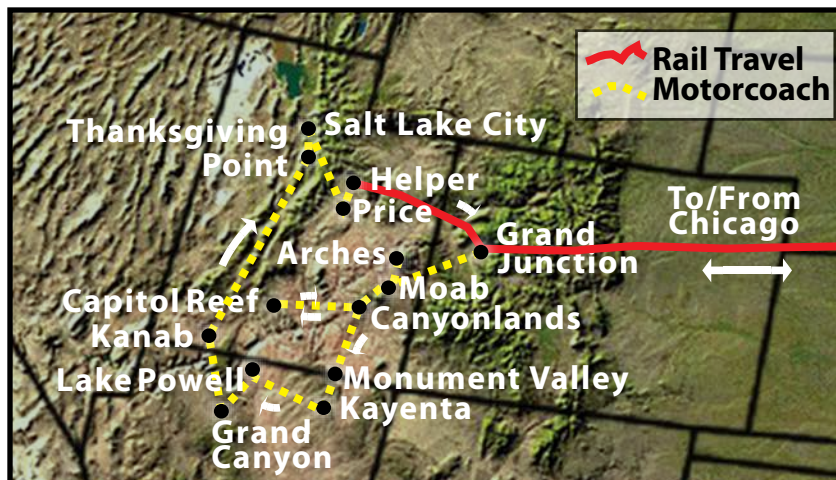
ARCHES NATIONAL PARK

Moab, Utah. Moab is a small resort town at the center of some of the most stunning rock landscapes on earth.

Our home for the next two nights will be the Hampton Inn. **B, L & D**

Day 3: Arches and Canyonlands National Parks

Following a Continental breakfast we'll board a comfortable motorcoach and travel to the Visitor Center at Arches National Park. The park contains the world's largest concentration of natural stone arches. You'll view a red, arid desert punctuated with oddly eroded sandstone forms such as fins, pinnacle rocks and arches. The 73,000-acre region has over 2,000 of these "miracles of nature."



During our visit to this magnificent natural attraction, we'll experience Balanced Rock, the double arch, and Fiery Furnace (a labyrinth of sandstone cliffs and monoliths). At the Devil's Garden, you can view Landscape Arch, Double O Arch, and Dark Angel Arch.

Following a box lunch (included), we'll visit Canyonlands National Park, a wilderness of countless canyons and fantastically formed buttes carved by the Colorado River and its tributaries. Rivers divide the park into four districts: the Island in the Sky, the Needles, the Maze, and the rivers themselves. These areas share a primitive desert atmosphere, but each offers different opportunities for sightseeing.

We'll visit the Island in the Sky, a mesa that rests on sheer sandstone cliffs over 1,000 feet above the surrounding terrain. Every overlook offers a different perspective on Canyonlands' spectacular landscape.

We return to Moab for a second night. Dinner at a nearby restaurant is included. **CB, L & D**

Day 4: Capitol Reef

Following a Continental breakfast we travel to Capitol Reef National Park.

Along the 25 mile scenic drive we'll view the Waterpocket Fold that defines Capitol Reef National Park. A nearly 100-mile long warp in the earth's crust, Waterpocket Fold is a classic monocline: a regional fold with one very steep side in an area of otherwise horizontal layers.

A monocline is a "step-up" in the rock layers. The rock layers on the west side of the Waterpocket Fold have been lifted more than 7,000 feet higher than the layers on the east.

We'll continue to Torrey, Utah where we'll check into the Capitol Reef Resort, our home for the night. There are restaurants nearby for an "on-your-own" dinner. **CB**

Day 5: Monument Valley

This morning we'll travel south to Kayenta, Arizona. A highlight of this day will be the drive through Monument Valley. The region provides perhaps the most enduring and definitive images of the American West. The isolated red mesas and buttes surrounded by empty, sandy desert have been filmed and photographed countless times over the years for movies, advertisements and brochures.

We'll spend the night at the Kayenta Monument Valley. Dinner tonight is included. **D**

Day 6: Kayenta to Lake Powell

Following an included breakfast, we will board our motorcoach and travel northwest to Page, Arizona.

We embark on a lunch cruise on Lake Powell, the second largest man-made lake in the country. We'll cruise as far as Antelope Canyon, a spectacular attraction. The Canyon is so narrow that you'll feel that you could almost touch the walls which rise straight up.



LAKE POWELL

Our home for tonight will be the Holiday Inn Express and Suites. **B & L**

Day 7: Grand Canyon North Rim

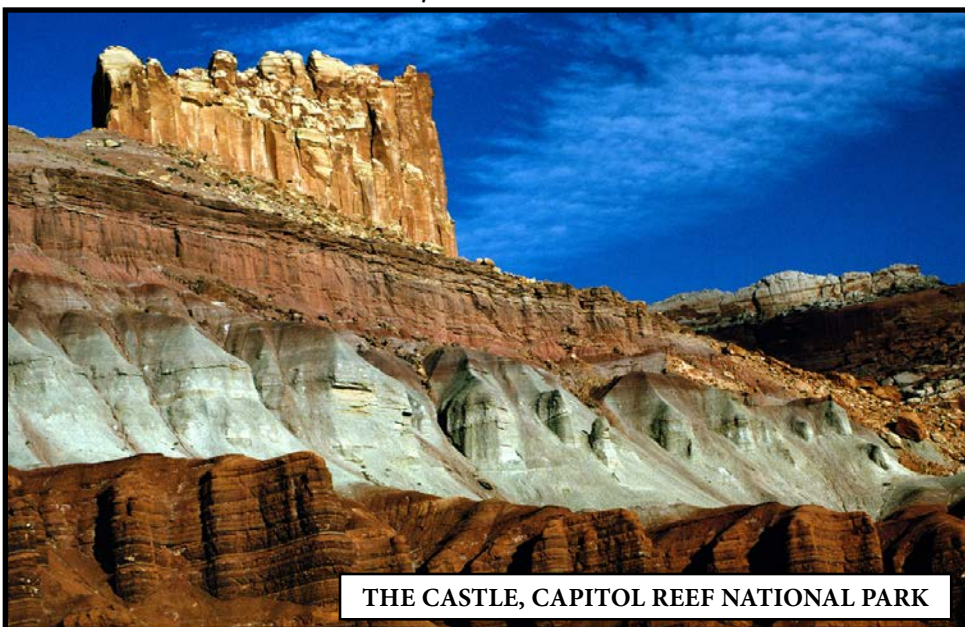
Breakfast is included at the hotel. No trip to Southern Utah is complete without visiting the Grand Canyon, and why not take the road less traveled and visit the North Rim? 1000 feet higher than the South Rim, the North Rim of the Grand Canyon provides impressive vistas along the Colorado River, and a better glimpse at the inner canyon while retaining a sense of solitude.

An "on-your-own" lunch stop will be made at the North Rim.

Following our visit of the Grand Canyon we will board our deluxe motorcoach and travel into southern Utah. Our destination is Kanab.

Upon arrival we will check into the Holiday Inn and Suites for the night.

You are free to explore this evening. The town is like a Hollywood portrayal of the classic American West - towering Navajo sandstone cliffs and vistas of sagebrush. This scenery has lured filmmakers to Kanab for nearly 80 years. Abandoned film sets near town have become tourist attractions. The buildings all over town have plenty of movie posters and



THE CASTLE, CAPITOL REEF NATIONAL PARK

autographed photos to support Kanab's self-proclaimed title, "Little Hollywood."
B

Day 8: En Route to Lehi

Following breakfast in our hotel, we begin our journey north across southern Utah. Our destination is Lehi, site of Thanksgiving Point, a world-class attraction on Lake Utah 30 miles south of Salt Lake City. An "on-your-own" lunch stop will be made.

Our hotel for the next two nights is the Springhill Suites. The hotel is adjacent to Thanksgiving Point.

You're free this evening to relax in your hotel or explore Thanksgiving Point. There are several restaurant options available for dinner. **B**

Day 9: Thanksgiving Point

Breakfast is included in our hotel today.

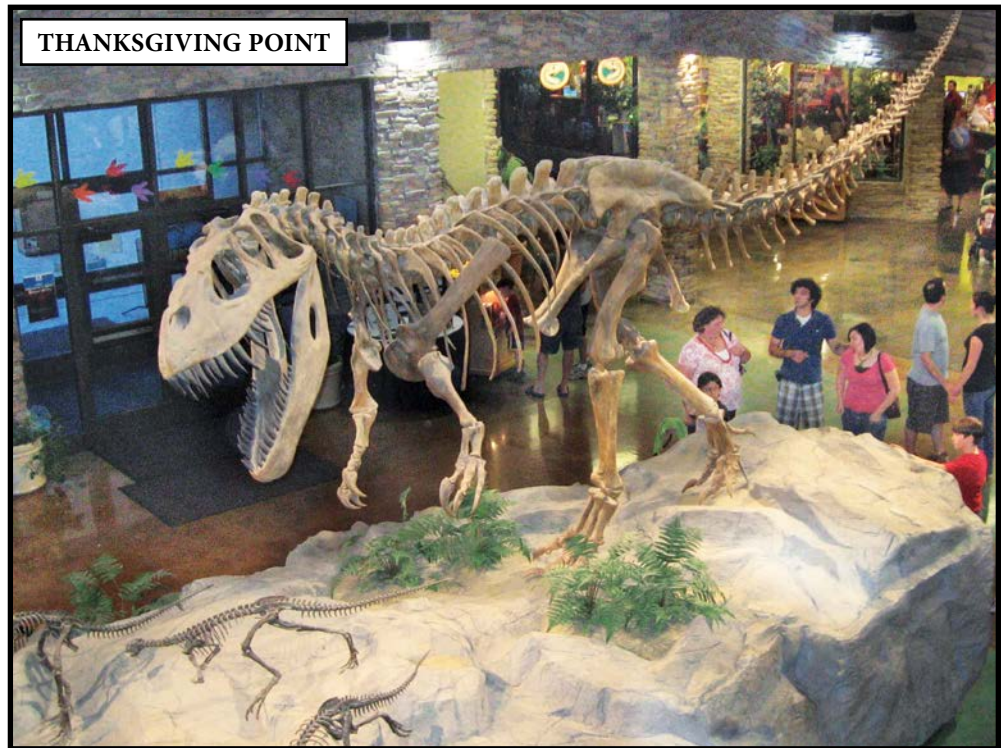
Thanksgiving Point is a farm, garden, and museum complex. Your pass includes the Museum of Ancient Life, Farm Country, the Museum of Natural Curiosity, and Ashton Gardens. You are free to explore at your leisure. There are also several retail shops, a spa and an ice cream shop.

The **Museum of Ancient Life** contains one of the world's largest displays of mounted dinosaurs with 60 complete dinosaur skeletons in the galleries, along with more than 50 hands-on exhibits. This is the destination to enjoy learning about our pre-historic animals. Also, be sure to check out the working paleontology lab where workers are unearthing real dinosaur bones. Currently the lab is working on a 150-million-year-old long neck dinosaur called a Barosaurus.

There is also a Mammoth Screen Theatre located inside the museum which shows 3D National Geographic movies.

Ashton Gardens covers approximately 55 acres and includes 15 different theme gardens. Other themed gardens include a Monet pond, Rocky Mountain landscapes and a rose garden featuring 60 varieties.

Thanksgiving Point's newest venue is the **Museum of Natural Curiosity**. The museum features five exhibit areas: Rainforest, Waterworks, Kidopolis,



Traveling Exhibits and the five-acre outdoor component, Discovery Garden.

We will spend our final night at the Springhill Suites. **B**

Day 10: Mormon Tabernacle Choir / Salt Lake City

Following an included breakfast we'll board our deluxe motorcoach and travel 30 miles to Salt Lake City. Our first destination is the Mormon Tabernacle where we will attend the Sunday morning Music and the Spoken Word featuring the world famous Mormon Tabernacle Choir. This includes modern and traditional arrangements of spiritual, patriotic, popular, classic and contemporary music coupled with timely, inspiring prose. Music and the Spoken Word becomes an uplifting and rejuvenating memorable experience.

The remainder of our day will be devoted to a delightful tour of Salt Lake City. You'll see the Mormon Temple, Tabernacle, Brigham Young's Monument and private burial ground, Beehive House, Lion House, Eagle Gate, University of Utah, Fort Douglas and Trolley Square. There will be "on-your-own" lunch opportunities.

We will arrive in Price, Utah where we will spend the night at the Holiday Inn Express and Suites. **B**

Day 11: En Route / Colorado Rockies

This morning we will transfer to the nearby Helper Amtrak station and board the California Zephyr for our trip to Chicago.

You'll enjoy the same accommodations you had on your westbound train. Breakfast, lunch and dinner are included. Snacks, beverages and sandwiches are available in the lounge car throughout the day.

Make sure you take the opportunity to view the spectacular scenery from the Sightseer Lounge car as we make our way toward Denver. When we leave Glenwood Springs, we will begin to climb through the spectacular Rockies toward the Continental Divide. The mountain vistas will continue throughout the afternoon. Later we'll encounter the famous, 6.2-mile long Moffat Tunnel and go under the Continental Divide. We'll arrive in Denver at 6:38 p.m. **B, L & D**

Day 12: En Route to Chicago

The California Zephyr will roll across Iowa and Illinois and arrive in Chicago at mid afternoon. Some tour members will change to trains bound for Midwest, Eastern and Southern home cities. Others will spend the night in Chicago and continue home tomorrow. **B & L**

GENERAL INFORMATION

REGISTRATION AND DEPOSIT:

A deposit of \$200 per person, of which \$100 per person is non-refundable, is required to finalize registration. The balance is due 75 days prior to departure. If payments are not received by the due date(s) specified, reservations may be cancelled without notice.

TOUR CANCELLATIONS:

If cancellation is received by America by Rail more than 75 days prior to departure, \$100 of your deposit will be retained. For cancellations received within 75 days of departure, the following per person cancellation fees apply:

- 46-75 days prior to departure:
25% of total tour cost.
- 15-45 days prior to departure:
50% of total tour cost.
- 14 days or less prior to departure through duration of the tour: 100% of total tour cost.

The total tour cost includes tour price, add-ons and upgrades.

Refunds will be made approximately 30 days after the conclusion of the tour.

Payment / cancellation exceptions are noted on tours. All pricing is per person / double occupancy unless otherwise stated.

TOUR PRICE INCLUDES:

TRANSPORTATION

Rail transportation over the tour route and motorcoach, van, or other modes of transportation where specified in the tour.

TRAIN ACCOMMODATIONS

All tours except those categorized as Coach Class include private Roomette on Amtrak overnight trains and Bedrooms (double occupancy) or Roomettes (single occupancy) on VIA Rail Canada overnight trains. Bedrooms on Amtrak are available at an additional cost. Reclining coach seats are included on U.S. and Canadian trains used only during the daytime except for those categorized as Coach Class. Coach Class tours include reclining coach seats with leg rests on Amtrak trains. Meals on the trains are included for those traveling Coach Class on the North American tours as indicated in the itinerary.

HOTELS

Accommodations are based on two persons sharing a room. Two-bedded rooms are provided in most instances. However, sometimes their availability is limited. If a two-bedded room is required, please notify America by Rail at time of registration. America by Rail reserves the right to substitute hotels for those named in any tour description, when necessary. Every effort is made to have hotel rooms available for occupancy upon arrival. There may be instances when rooms are not available until later.

SINGLE ROOMS

Single rooms at hotels and Amtrak Roomettes on a single basis are available at a single cost.

SIGHTSEEING / ADMISSIONS

Sightseeing, as outlined in the itineraries, will be provided by motorcoaches in most instances. Admission fees are included as specified. Sightseeing tour arrangements may be altered if required.

MEALS

All included meals are listed in the tour itinerary. Persons requiring a special diet must inform America by Rail at the time of registration. Not all restaurants / trains will be able to honor special requests. Due to events beyond our control, trains are sometimes delayed and supplies may become limited. If you have special dietary requirements, please make sure you have a sufficient supply of nourishment to meet your dietary needs.

In the itineraries, the meals are listed at the end of each day using CB for Continental breakfast, B for breakfast, L for lunch, and D for dinner.

BAGGAGE

For your convenience and to expedite movement, baggage handling is limited to one suitcase per person. Transfer and portage of one suitcase per person is included at

overnight stopovers. On most tours the one suitcase per person is handled by America by Rail and is checked through to the next destination. An overnight bag is used while en route. America by Rail is not responsible for loss or damage to your baggage or for any lost, stolen or destroyed item. Specified transfers between rail stations and hotels are included.

TOUR DIRECTORS

Services of a qualified America by Rail Tour Director are included for all matters pertaining to the tour. Tour Directors will meet all tour members at the origination city.

TIPS AND TAXES

All gratuities to hotel staff (except to chambermaids), sightseeing guides and drivers are included. Gratuities for sleeping car attendants and meals aboard the train are included. Gratuities for meals specified in the tour itinerary are included on escorted portions of the tour. Gratuities for cruise ship stateroom stewards and dining waitstaff are included.

TOUR PRICE DOES NOT INCLUDE:

Transportation and tips between your home city and the official origination city; charges for excess baggage; health, accident or baggage insurance; tips to chambermaids and for personal services; items of a personal nature such as laundry; meals, except those specified as included; gratuities for special services; charges for room service, and alcoholic beverages with included meals.

Gratuities for the America by Rail Tour Directors are at your discretion; \$3-\$10 per person per day is the industry standard. They should be extended on an individual basis, not as a group.

RAIL SCHEDULES:

The routing and features described in tour descriptions may be altered to adjust to rail schedules in effect at the time of the tour. America by Rail reserves the right to substitute motorcoach or air travel for unavailable rail schedules, misconnections, delays or other causes.

TRAVEL DOCUMENTS :

A valid passport will be required for any trip crossing international borders. i.e. into or out of the United States. At time of reservation we will need your date of birth; gender, passport number, passport expiration date and issuing country.

HEALTH, MOBILITY AND FITNESS TO TRAVEL:

America by Rail will make reasonable efforts to accommodate the special needs of tour participants. Such participants, however, should be aware that the Americans with Disabilities Act is inapplicable outside of the United States and facilities outside the United States for disabled individuals are limited. Any type of disability requiring special provisions must be reported to America by Rail at the time of registration. America by Rail is not required to provide participants with personal devices, such as wheelchairs or individually prescribed devices such as prescription eyeglasses, or to provide services of a personal nature including assistance in eating, toileting or dressing. Accordingly, all participants are responsible to participate without assistance of the America by Rail Tour Director or other attendant. Tour Directors are prohibited from providing physical assistance or accommodations (beyond normal civil courtesies, such as holding doors open for passing). It is recommended that participants requiring assistance, including those requiring the use of a mobility device, be accompanied by a travel companion who will be responsible to provide required assistance. Participants will be asked to submit a confidential medical form for each tour.

Those travelling with oxygen are required to advise America by Rail at least two weeks prior to departure. Amtrak requires all equipment, including oxygen concentrators, must be able to operate a minimum of four hours without available onboard electrical power (in the event of a power disruption onboard). Oxygen equipment must be Underwriter's Laboratory (UL) or Factory Mutual (FM) listed. The total weight of all tanks may not exceed 120 lbs. Within this limit, no more than 2

tanks 50 lb each, or no more than 6 tanks 20 lbs each

SMOKING:

Smoking is not permitted on America by Rail motorcoaches. Those who smoke may do so at any of the frequent stops we make. All Amtrak and VIA Rail trains are entirely smoke-free. If time is available at station stops, it will be announced by the conductor. Cruise ships policies vary from line to line, but all have designated areas to accommodate smokers.

PLEASE NOTE:

America by Rail reserves the right, at its sole discretion, to accept or retain any individuals as members of the tour. The acceptance of any service provided as part of an America by Rail tour, or any ticket or voucher, shall be deemed to be acceptance of and consent to these conditions.

All rates published herein are in U.S. dollars and based on tariffs and exchange rates in effect on the printing date of the tour brochure. Prices and arrangements are subject to change without notice.

No persons, other than a representative of America by Rail, authorized by a document in writing, may vary, add or waive any term or condition set forth in the preceding provisions.

A \$50 per person fee will be assessed for each itinerary alteration requested after final arrangements are confirmed.

It is our company policy to issue a tour roster to all tour participants containing all tour participants' names and addresses. If you do not want your address included, you must let us know at time of reservation.

Times, schedules, entertainment and activities are subject to change without notice.

IMPORTANT INFORMATION REGARDING FUEL SUPPLEMENT:

Please be advised America by Rail reserves the right to apply a fuel supplement for all guests should the price of oil warrant it.

RESPONSIBILITY CLAUSE:

America by Rail acts only in the capacity as an agent for the owners and contractors providing means of transportation, hotel or other services. All tour services, tickets and vouchers are subject to any and all terms and conditions under which such means of transportation, hotel or other services are offered or provided. America by Rail shall not be or become liable or responsible in any way whatsoever, for any loss, injury or damage from acts of God, sickness, theft, weather, strikes, war, or quarantine however caused or arising. America by Rail reserves the right to cancel a tour in the event tour participation does not meet minimum requirements.

America by Rail shall not be obligated to honor any booking resulting from, nor shall be responsible or liable whatsoever in connection with, misprints or errors of any kind, whether in brochures, advertisements, on the Internet, during the booking process or otherwise, that result in traveler being undercharged for the tour. America by Rail reserves the right, prior to departure, to collect the correct fare or cancel the booking and refund any payment made by traveler.

AMTRAK STATEMENT:

The National Railroad Passenger Corporation (Amtrak) is not to be held responsible for any act, omissions, or event during the time passengers are not on board their trains or conveyance. The passenger contract in use of the National Railroad Passenger Corporation (Amtrak) when issued, shall constitute the sole contract between the National Railroad Passenger Corporation (Amtrak) and purchaser of these tours and / or passenger. All conditions are subject to the laws of the District of Columbia, U.S.A.

America by Rail® is the registered trademark of America by Rail, Inc.