

CANYONLANDS

Grand Canyon • Lake Powell • Bryce and Zion National Parks •
Las Vegas • Oak Creek Canyon • Sedona

LAKE POWELL AND GLEN CANYON DAM



- **Grand Canyon** of the Colorado River is one of the world's largest outstanding spectacles. In form, size and flowing colors, it is unsurpassed.
- **Bryce Canyon National Park** includes some of Earth's most colorful rocks, which have been sculpted by erosion into pillars called "hoodoos".
- **Zion National Park** is one of the West's greatest treasures. You'll find desert terrain and huge, sculpted rock formations coexisting with waterfalls and hanging gardens.
- **Glen Canyon Dam** has formed **Lake Powell**, the second largest man-made lake in the country.
- During our full day in **Las Vegas** we'll visit a number of the spectacular hotel/casinos.
- **Oak Creek Canyon Road** is known for its yellow and red cliffs dotted with pine, cypress and juniper.
- **Sedona** is surrounded by beautiful red-rock mountains.
- 3300 miles of comfortable, scenic travel on Amtrak's **Southwest Chief**.

Days 1-2Chicago to Flagstaff
Day 3.....Grand Canyon
Day 4.....Lake Powell
Day 5.....Bryce Canyon and
Zion National Parks

Day 6.....Las Vegas
Days 7-8Sedona
Days 9-10En Route to Chicago

TOUR DATE(S):

Fri., May 11 to Sun., May 20
Wed., Sept. 19 to Fri., Sept. 28

TOUR PRICE:

\$2,395 - 10 Days

Per person /double occupancy

Economy Class Tour: Roomette + \$650 p.p./d.o.
 Bedroom + \$1,195 p.p./d.o.

\$2,890 Single Roomette +\$1,300

FLY OPTION -Fly to/from Flagstaff.

8 Days

Price: \$2,075 p.p./d.o.

Single \$2,570

America by Rail will be happy to arrange your flights.

YOUR TRIP INCLUDES:

- Round-trip transportation by rail and deluxe motorcoach.
- Reclining coach seat with leg rest on Amtrak for two nights.
- First-class hotel accommodations for seven nights.
- 19 meals.
- Sightseeing tours of all included National Parks. Admissions to all included attractions.
- Baggage handling, taxes & tips.
- Services of a professional America by Rail Tour Director.

AMERICA BY RAIL WILL BE HAPPY TO MAKE ARRANGEMENTS FOR YOUR CONNECTING TRANSPORTATION TO CHICAGO AND BACK BY RAIL OR AIR.

Day 1: Depart Chicago

Our Canyonlands tour members will meet the Tour Director in Chicago's Union Station. The Willis Tower, one of the tallest buildings in the United States, is close by. Other Chicago attractions are a brief cab ride away.

Early afternoon we'll board the Southwest Chief. Relax in your comfortable reclining coach seat with leg rest. Roomettes or Bedrooms are available at an additional cost. All dining car meals are included. Enjoy a full-course dinner in the dining car.

You will want to spend time in the Sight-seer Lounge where the glass windows rise from floor level to the ceiling. It is a great place to view the passing scenery. **D**

Day 2: En Route / Flagstaff

During the night we traveled across the state of Kansas. We will be near the Colorado border when you awaken. Today you will experience the excitement of the Santa Fe Trail as we cross New Mexico and Arizona. You will have time for a train side walk when we arrive in Albuquerque at mid afternoon. Our arrival into Flagstaff is scheduled for 8:46 p.m. Upon arrival we'll transfer the short distance to the Comfort Inn. **B, L & D**

Day 3: The Grand Canyon

After a Continental breakfast, we'll travel by motorcoach to the Grand Canyon. The Grand Canyon of the Colorado River is one of the world's outstanding spectacles. In form, size, flowing color, and geological significance, it is unsurpassed.

We will view the Canyon from several observation areas. We will stop at Mather Point and Grand View.

At mid afternoon we'll continue on to Lee's Ferry. Lee's Ferry is at the lower mouth of Glen Canyon. You will have crossed the Colorado River on the Navajo Bridge, viewing Marble Canyon which is the beginning of the Grand Canyon. We'll visit the Carl Hayden Visitor Center at Glen Canyon. Our final destination for the day is the Lake Powell Resort in Page, Arizona. We'll spend the night at the Resort and have an included dinner in the popular Rainbow Room. **CB & D**

CB CONTINENTAL BREAKFAST
B BREAKFAST
L LUNCH
D DINNER

Day 4: Lake Powell

Following an included breakfast, we'll embark on an extensive cruise on Lake Powell, the second largest man-made lake in the country. We'll cruise as far as Antelope Canyon, a spectacular attraction. The Canyon is so narrow that you'll feel that you could almost touch the walls which rise straight up.

We'll continue by motorcoach to Bryce, Utah, where we'll spend the night at the Best Western Bryce Canyon Grand Hotel. You'll find the hotel to be a fascinating destination with many attractions. Dinner is included at the Cowboy's Buffet and Steak Room. **B & D**

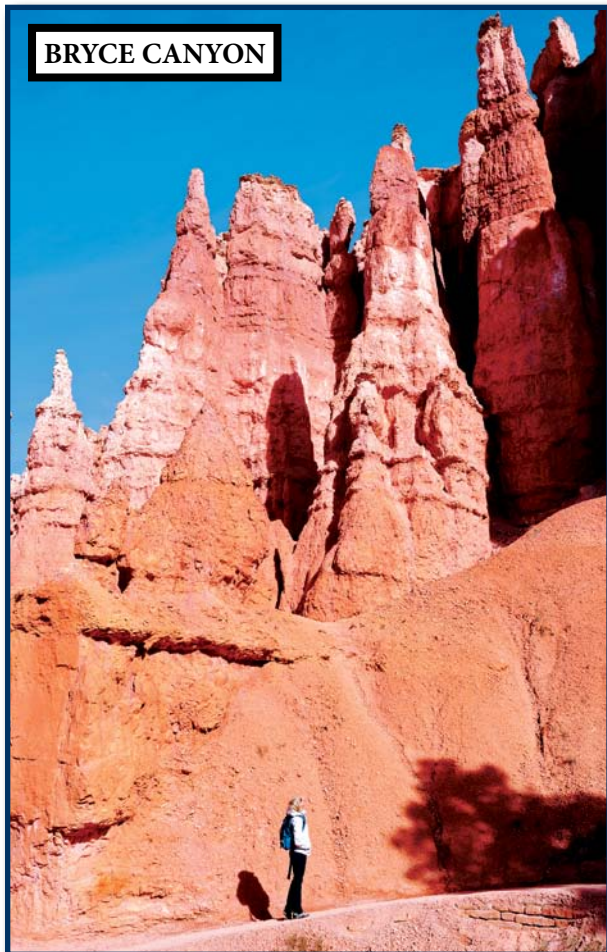
Day 5: Bryce Canyon / Zion National Park

Following an included breakfast, we'll transfer the short distance to Bryce Canyon National Park. Bryce Canyon includes some of Earth's most colorful rocks, which have been sculpted by erosion into pillars called "hoodoos" and other fantastic forms. Iron oxides give red, yellow and brown tints to the limestone, while manganese oxides lend a lavender hue.

Bryce is not a true canyon, but, a series of horseshoe-shaped amphitheaters carved in the edge of the Paunsaugunt Plateau by tributaries of the Paria River. We'll travel with a local guide on a 37-mile round trip on a road that follows the high rim to many major vantage points, such as Inspiration Point, Sunrise Point, Sunset Point, Bryce Point, Paria View, the Natural Bridge, and Rainbow Point.

Following an "on-your-own" lunch, we'll continue to another of the West's treasures, Zion National Park. You'll find desert terrain and huge, sculpted rock formations coexisting with waterfalls and hanging gardens. The gigantic stone masses of the West Temple and





BRYCE CANYON

the Watchman guard the southern entrance to the park. From a multicolored stairway, the Watchman looms 2555 feet above the canyon floor. The 7810-foot West Temple is one of the most prominent formations in the southern section.

Just north of the southern entrance is the beginning of Zion Canyon, a spectacular gorge being carved through strangely-colored sandstone and shale by the Virgin River. About a half-mile deep and a half-mile wide at its mouth, the canyon narrows to about 300 feet at the Temple of Sinawava, the narrowest portion of the canyon accessible by car and about eight miles from the park entrance. We will take the tram ride in Zion.

Following our time at Zion National Park, we'll travel 136 miles to Las Vegas where we'll arrive at mid evening. A stop for dinner (included) will be made en route. Our home for the next two nights will be the conveniently located Treasure Island Hotel. You're free this evening to begin to explore this magnificent oasis in the desert. **B & D**

Day 6: Las Vegas

A buffet breakfast is included this morning in our hotel. At mid morning we'll embark on a tour of three spectacular hotel/casinos: New York New York, Excalibur and Luxor. The breathtakingly beautiful Venetian is within walking distance from our hotel. There is an extensive food court.

This evening we'll transfer to original Las Vegas, now known as "downtown." What this part of the city has done to compete with the strip hotel/casinos is phenomenal. They have constructed a huge roof that covers Fremont Street. You'll view the "Fremont Street Experience". It's a ten-minute show in which over two million lights are utilized. There will be time to enjoy the many options of "downtown." **B**

Day 7: En Route / Sedona

We'll check out of our hotel this morning and head east across the desert. We will stop in Seligman, Arizona, a "Route 66" town. Enjoy an "on-your-own" lunch in this historic setting.

Following lunch, we'll begin another "scenic spectacular" when we head south on State Route 89A, the famous Oak Creek Canyon road. About 16 miles long and rarely more than one mile wide, the canyon is known for its spectacularly colored white, yellow, and red cliffs dotted with pine, cypress, and juniper. Rocky gorges, unusual rock formations, and buttes add interest to the drive.

By late afternoon we'll arrive in beautiful Sedona, a center for contemporary and traditional arts and a relatively upscale retirement and tourism area. Galleries and boutiques are found throughout the city and in Tlaquepaque, a Mexican/Spanish-style village. Specialty shops feature pottery, sculptures, paintings, jewelry, and imported wares.

Our hotel is the attractive Best Western Inn of Sedona, one of the town's finest hostelries. You'll enjoy a great view of the surrounding hills. Tonight we will enjoy dinner at a local restaurant (included). **D**

Day 8: Sedona / Flagstaff

You're free to enjoy all that this beautiful city has to offer. Sit on your veranda this morning and soak in all of the red-rock beauty that lies before you. Wander through the excellent shops and boutiques near our hotel.

Several options are suggested. Embark on a gentle jeep ride into the scenic and historic Dry Creek Basin surrounded by seven majestic canyons. Relive the early cowboy days with the tales of murder and moonshine at the old log cabin. A variety of other jeep excursions into the red rock mountains and canyons surrounding Sedona are available.

Another option is the famous Verde Canyon Railroad excursion train. Enjoy the three-and-a-half-hour round-trip ride through Arizona's "other" Grand Canyon. You'll view Sinaqua Indian Ruins, unique and distinctive geology and a variety of wildlife and waterfowl. Live narration and music is performed throughout the trip. You are encouraged to enroll on this attraction at the time you book this tour. The deadline is 30 days prior to your departure. (The price is approximately \$50 per person.) Late afternoon, we'll board our motorcoach and travel north about 50 miles to Flagstaff. We'll return to the Comfort Inn. The Tour Director will host a Farewell Dinner this evening (included). **CB & D**

Day 9: En Route

We'll transfer the short distance to the Flagstaff Amtrak station to board Amtrak's famous Southwest Chief prior to its early morning departure for Chicago. You'll again enjoy your reclining coach seat with leg rest, all train meals and other amenities experienced on the west-bound Southwest Chief. Sleeping accommodations are available at an additional cost. Breakfast will be served in the dining car.

You'll want to take advantage of the fascinating scenery of Arizona and New Mexico our train will pass through during the day. **B, L & D**

Day 10: En Route to Chicago

The Southwest Chief is scheduled to arrive in Chicago mid afternoon. **B & L**

GENERAL INFORMATION

MEALS

REGISTRATION AND DEPOSIT:

A deposit of \$200 per person (\$500 for cruise), of which \$100 per person is non-refundable, is required to finalize registration. The balance is due 75 days prior to departure (90 days for cruise). If payments are not received by the due date(s) specified, reservations may be cancelled without notice.

Cruises: If reservation is made after final payment due date, prevailing rates and availability apply.

TOUR CANCELLATIONS:

If cancellation is received by America by Rail more than 75 days prior to departure (90 days for cruise), \$100 of your deposit will be retained. For cancellations received within 75 days of departure, the following per person cancellation fees apply (90 days for cruise):

- 76-90 days prior to departure: (cruise only)
20% of total tour cost.
- 46-75 days prior to departure:
25% of total tour cost.
- 15-45 days prior to departure:
50% of total tour cost.
- 14 days or less prior to departure through duration of the tour: 100% of total tour cost.

The total tour cost includes tour price, add-ons and upgrades.

Refunds will be made approximately 30 days after the conclusion of the tour.

Payment / cancellation exceptions are noted on tours.

TOUR PRICE INCLUDES:

TRANSPORTATION

Rail transportation over the tour route and motorcoach, van, or other modes of transportation where specified in the tour description.

TRAIN ACCOMMODATIONS

All tours except those categorized as Coach Class include private Roomette on Amtrak overnight trains and Bedrooms (double occupancy) or Roomettes (single occupancy) on VIA Rail Canada overnight trains. Bedrooms on Amtrak are available at an additional cost. Reclining coach seats are included on U.S. and Canadian trains used only during the daytime except for those categorized as Coach Class. Coach Class tours include reclining coach seats with leg rests on Amtrak trains. Meals on the trains are included for those traveling Coach Class on the North American tours as indicated in the itinerary.

CRUISE ACCOMMODATIONS

Cruise tours include inside staterooms (double occupancy) on cruise ships. Upgraded staterooms may be available at an additional cost.

HOTELS

Accommodations are based on two persons sharing a room with bath. Two-bedded rooms are provided in most instances. However, sometimes their availability is limited. If a two-bedded room is required, please notify America by Rail at time of registration.

America by Rail reserves the right to substitute hotels for those named in any tour description, when necessary. Every effort is made to have hotel rooms available for occupancy upon arrival. There may be instances when rooms are not available until later.

SINGLE ROOMS

Single rooms at hotels and Amtrak Roomettes on a single basis are available at a supplemental cost.

SIGHTSEEING/ADMISSIONS

Sightseeing, as outlined in the itineraries, will be provided by motorcoaches in most instances. Admission fees are included as specified. Sightseeing tour arrangements may be altered if required.

All included meals are listed in the tour itinerary. Persons requiring a special diet must inform America by Rail at the time of registration. Not all restaurants/trains will be able to honor special requests. Due to events beyond our control, trains are sometimes delayed and supplies may become limited. If you have special dietary requirements, please make sure you have a sufficient supply of nourishment to meet your dietary needs.

In the itineraries, the meals are listed at the end of each day using CB for Continental breakfast, B for breakfast, L for lunch, and D for dinner.

BAGGAGE

For your convenience and to expedite movement, baggage handling is limited to one suitcase per person. Transfer and portage of one suitcase per person is included at overnight stopovers. On most tours the one suitcase per person is handled by America by Rail and is checked through to the next destination. Carry-on luggage is used while en route. America by Rail is not responsible for loss or damage to your baggage or for any lost, stolen or destroyed item. Specified transfers between rail stations and hotels are included.

TOUR DIRECTORS

Services of a qualified America by Rail Tour Director are included for all matters pertaining to the tour. Tour Directors will meet all tour members at the origination city.

TIPS AND TAXES

All gratuities to hotel staff (except to chambermaids), sight-seeing guides and drivers are included. Gratuities for sleeping car attendants and meals aboard the train are included. Gratuities for meals specified in the tour itinerary are included on escorted portions of the tour. Gratuities for cruise ship stateroom stewards and dining waitstaff are included.

TOUR PRICE DOES NOT INCLUDE:

Transportation and tips between your home city and the official origination city; charges for excess baggage; health, accident or baggage insurance; tips to chambermaids and for personal services; items of a personal nature such as laundry; meals, except those specified as included; gratuities for special services; charges for room service, and alcoholic beverages with included meals.

Gratuities to your America by Rail Tour Directors are an industry expectation. They should be extended on an individual basis, not as a group.

RAIL SCHEDULES:

The routing and features described in tour descriptions may be altered to adjust to rail schedules in effect at the time of the tour. America by Rail reserves the right to substitute motorcoach or air travel for unavailable rail schedules, misconnections, delays or other causes.

TRAVEL DOCUMENTS :

A valid passport will be required for any trip crossing international borders. i.e. into or out of the United States. At time of reservation we will need your date of birth; gender, passport number, passport expiration date and issuing country.

HEALTH, MOBILITY AND FITNESS TO TRAVEL:

Any type of disability requiring special treatment must be reported to America by Rail at the time of registration. Passengers requiring special assistance, including without limitations those who permanently or periodically use a wheelchair, must be accompanied by someone who is fit and able to assist them, who will be totally responsible for providing all required assistance. Participants will be asked to submit a confidential medical form for each tour.

SMOKING:

Smoking is not permitted on America by Rail motorcoaches. Those who smoke may do so at any of the frequent

stops we make. All Amtrak and VIA Rail trains are entirely smoke-free. If time is available at station stops, it will be announced by the conductor. Cruise ships policies vary from line to line, but all have designated areas to accommodate smokers.

PLEASE NOTE:

America by Rail reserves the right, at its sole discretion, to accept or retain any individuals as members of the tour. The acceptance of any service provided as part of an America by Rail tour, or any ticket or voucher, shall be deemed to be acceptance of and consent by the tour member to these conditions.

All rates published herein are in U.S. dollars and based on tariffs and exchange rates in effect on the printing date of the tour brochure. Prices and arrangements are subject to change without notice.

No persons, other than a representative of America by Rail, authorized by a document in writing, may vary, add or waive any term or condition set forth in the preceding provisions.

A \$50 per person fee will be assessed for each itinerary alteration requested after final arrangements are confirmed.

It is our company policy to issue a tour roster to all tour participants containing all tour participants' names and addresses. If you do not want your address included, you must let us know at time of reservation.

Times, schedules, entertainment and activities are subject to change without notice.

IMPORTANT INFORMATION REGARDING FUEL SUPPLEMENT:

Please be advised America by Rail reserves the right to apply a fuel supplement for all guests should the price of oil warrant it.

RESPONSIBILITY CLAUSE:

America by Rail acts only in the capacity as an agent for the owners and contractors providing means of transportation, hotel or other services. All tour services, tickets and vouchers are subject to any and all terms and conditions under which such means of transportation, hotel or other services are offered or provided. America by Rail shall not be or become liable or responsible in any way whatsoever, for any loss, injury or damage from acts of God, sickness, theft, weather, strikes, war, or quarantine however caused or arising.

America by Rail reserves the right to cancel a tour in the event tour participation does not meet minimum requirements.

America by Rail shall not be obligated to honor any booking resulting from, nor shall be responsible or liable whatsoever in connection with, misprints or errors of any kind, whether in brochures, advertisements, on the Internet, during the booking process or otherwise, that result in traveler being undercharged for the tour. America by Rail reserves the right, prior to departure, to collect the correct fare or cancel the booking and refund any payment made by traveler.

AMTRAK STATEMENT:

The National Railroad Passenger Corporation (Amtrak) is not to be held responsible for any act, omissions, or event during the time passengers are not on board their trains or conveyance. The passenger contract in use of the National Railroad Passenger Corporation (Amtrak) when issued, shall constitute the sole contract between the National Railroad Passenger Corporation (Amtrak) and purchaser of these tours and/or passenger. All conditions are subject to the laws of the District of Columbia, U.S.A.

America by Rail® is the registered trademark of America by Rail, Inc.